

MSG : Multiprotocol SCADA Gateway

Overview

The MSG is a modern SCADA communication gateway server for telemetry applications. It supports all of Infinite's devices, offering seamless SCADA integration using a variety of means and protocols.

The MSG server is a host for multiple clients allowing seamless 24/7 unmanned device telemetry with centralised data management.

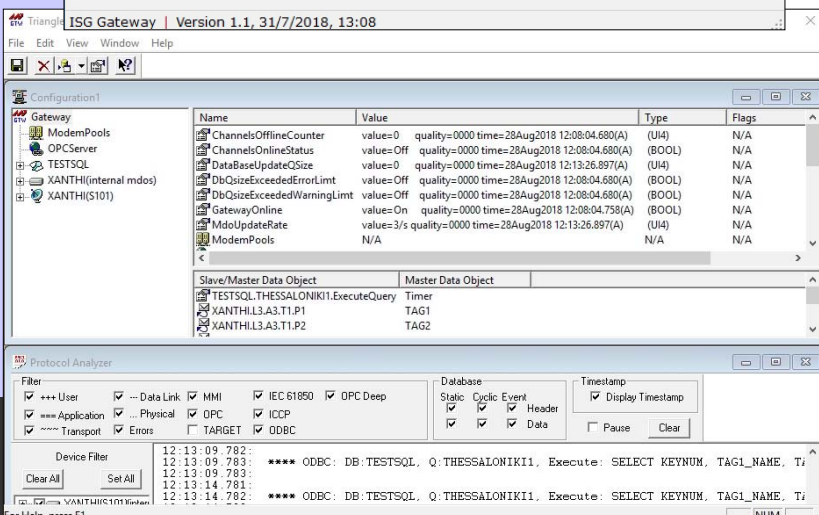
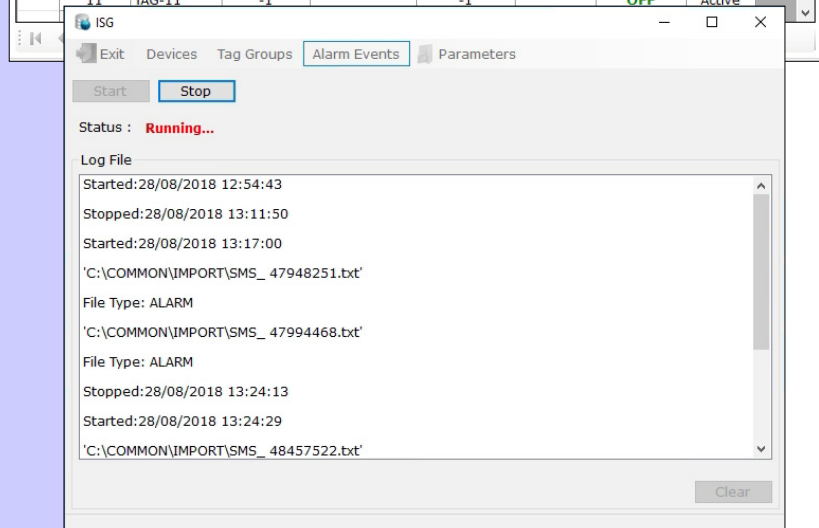
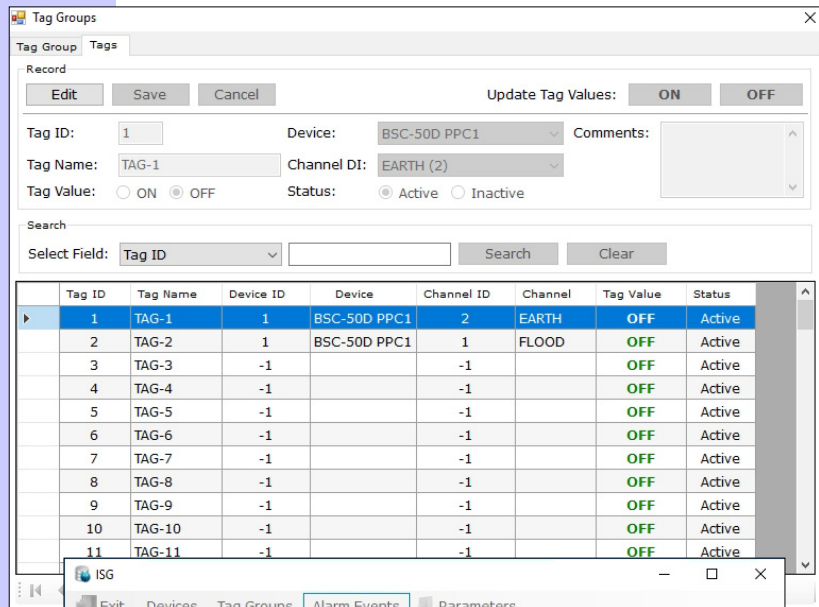
Features

- Support for all Infinite product ranges including BSC-50, ADU-500, ADU-700, Sigfox ADS, iLog & SCOM.
- Multiple SCADA protocols including, DNP3, DNP3 Secure Authentication v5 (SAv5), IEC 60870-5-101, IEC 60870-5-102, IEC 60870-5-103, IEC 60870-5-104, IEC 60870-5 Secure Authentication for -101 and -104, OPC Data Access, OPC XML Data Access, OPC Alarms & Events, IEC 61850 incl: 7-410(Hydro), 7-420(DER) & 61400-25, IEC 60870-6 (TASE.2/ICCP) incl. Bi-Directional Support, Modbus.
- Connectivity via RS232 serial port, USB, ethernet, modem.
- MS SQL server database backend for historical data storage and management.
- Integration with the WaT cloud server that offers a Web interface accessible using any browser & device.

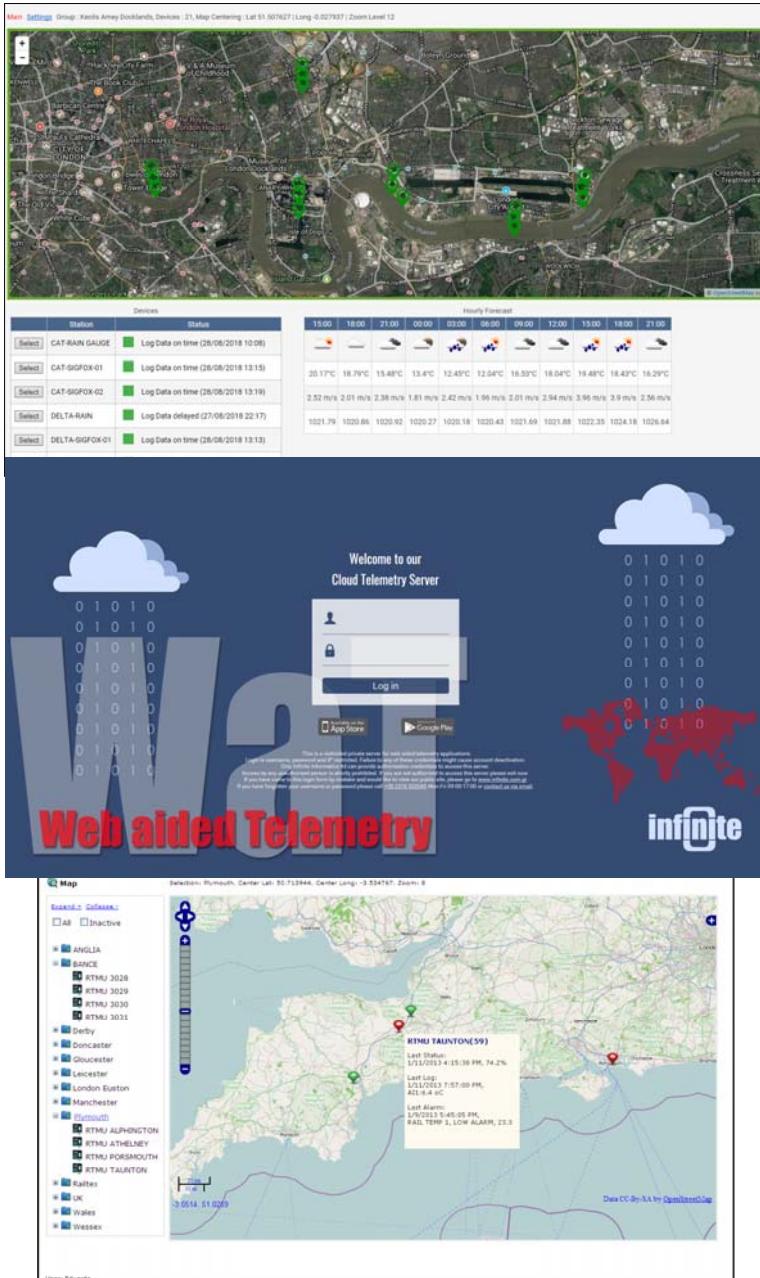
Device & data management

The MSG server has a comprehensive set of tools for users to :

- Create and manage devices and Tags.
- Test SCADA connectivity and protocol integrity.
- View, edit, delete, search & export data.
- Assign tags to IO and configure their properties.



Available integrated with the WaT cloud server server



SCADA & data functionality

- The MSG is a Windows application used by System Integrators and Utilities to collect data from OPC, IEC 60870-6 (TASE.2/ICCP), IEC 61850, IEC 60870-5, DNP3, or Modbus Server/Slave devices and then supplies this data to other control systems supporting OPC, IEC 60870-6 (TASE.2/ICCP) Client, IEC 60870-5, DNP3, and/or Modbus Client/Master communication protocols.
- Performs the work of an OPC Server or Protocol Translator.
- Translate between any number of available protocols.
- Allows translation between data types and control methods from different protocols. Supports mapping of points between Master and Slave, two Master, and/or two Slave protocol components.
- Supports multiple channels, utilizing the same or different protocols. Mixed channel types (serial, TCP/IP, modem) and Multidrop connections are supported.
- Includes an Equation Editor that supports creation of new data-points based on raw data or even combinations of raw data points and/or other equation points.
- Built-in diagnostics includes status information and error counts that are exposed through OPC and can be mapped to a status point in other protocols.
- OPC Certified

Technical characteristics

Front end	Graphical user interface Runs on any Windows PC
Database	Microsoft SQL Server 2013
PC	i3 or better 4GB RAM or better 256 GB HD or better
Modems	Sierra Wireless QSM26 GSM quad band modems



Infinite Informatics, Ltd.
 1, Valaoritou Street
 GR-54626 Thessaloniki, Greece
 Phone: +30-2310-553545,
 Fax: +30-2310-552006
 Email: sales@indinf.gr
 URL: www.infinite.com.gr, www.indinf.gr

Representative - Authorized dealer

